

# AS/NZS 1716 Masks

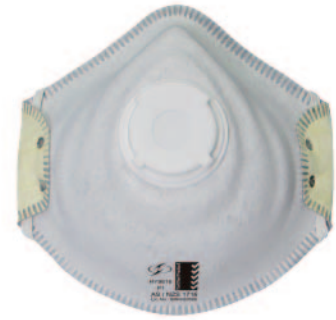
Moulded Cup Mask Series



9612 P1



9610 P1



9616 P1  
(Charcoal)



9622 P2



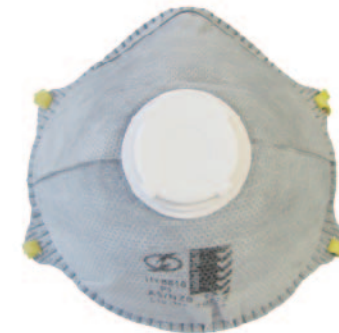
9620 P2



8610 P1



8612 P1



8616 P1  
(Charcoal)



8620 P2



8622 P2



8626 P2  
(Charcoal)



9910 P1



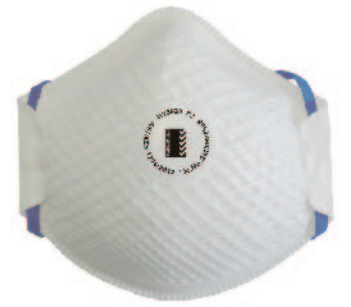
9922 P2



9912 P1



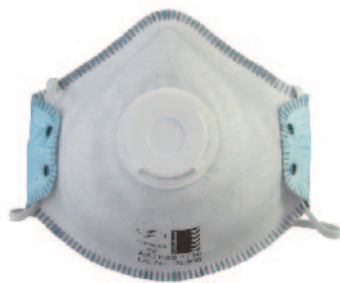
9916 P1  
(Charcoal)



9920 P2

## Features and Benefits

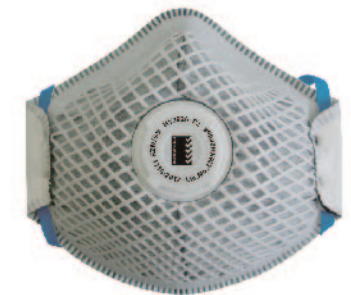
- Conforms to AS/NZS 1716:2012
- Economical 8600 series, comfortable 9600 series and mesh 9900 series
- Latex-free head straps and inner nose seal
- Colour coded for ease of identification
- Exhalation valve reduces hot air buildup and easy breath in hot/humid environments
- Activated Charcoal offers relief from nuisance organic vapors (below WEL)
- Maintenance Free



9626 P2  
(Charcoal)

## Features and Benefits

- Conforms to AS/NZS 1716:2012
- Economical 8600 series, comfortable 9600 series and mesh 9900 series
- Latex-free head straps and inner nose seal
- Colour coded for ease of identification
- Exhalation valve reduces hot air buildup and easy breath in hot/humid environments
- Activated Charcoal offers relief from nuisance organic vapors (below WEL)
- Maintenance Free



9926 P2  
(Charcoal)



# AS/NZS 1716 Masks

Moulded Cup Mask Series